



TEAMSOL

CONTACT

KP Offices, Office No 11
Jakaya Kikwete Road, Kilimani
P.O. Box 13101-00400, Nairobi
+254723238391/+254729793936
info@teamsol.co.ke
www.teamsol.co.ke

ENGINEERING FOR A BETTER FUTURE 

Who we are

Teamsol Limited was established in 2009 as a solution start up that was aimed at providing electrical solutions such as in-house design and customized electronic designs and implementations. Over the last 10-years, we have grown from a small unknown firm into a company employing about 90 people and rendering services to over 10 companies locally. Each of our clients is handled individually and offered services tailored or customized to their needs and expectations. Apart from the basic array of services, we are ready to satisfy even the most specific expectations/wishes of our clients.

Our main activities revolve around providing comprehensive Telecommunication (Radio Access Network and Fiber Optic) Roll-out, Maintenance, Managed services, and Fixed Data solutions to our clients. We have also ventured into turnkey Construction and civil work projects, solar & Wind installation and Transmission lines roll-out projects, logistics solutions, Energy & Petroleum Products, research in electronic board designs and software development as well as consulting services.

Our Mission

TEAMSOL is dedicated to providing quality construction, logistics, technical and managed services that are cost-effective to our clients. We will strive to implement a long-term relationship with our clients, based on integrity, safety, quality, timely service and anticipation of their needs.

Our Vision

To be the recognized as the leading company in Telecommunications, Energy, Construction and Logistics in Africa, for our integrity, work method, technology and human resources competences.



Table of Contents

Introduction

01	... Introduction Our Mission & Vision
02Our Values
03Our Team & Company Structure
04 Safety Commitment

Our Product and Services

07Telecommunication
09Construction
11 Logistics
12 Energy
13 Electrical
14 Training & Capacity Building

Work Portfolio

16 Projects Done/ On-Going
18 Awards & Recognitions
19 Our Clients

Our Values



INTEGRITY

We maintain the highest levels of integrity in all our actions. Our aim is to build long term partnerships based on trust.



QUALITY

We are committed to continuously improve our service and our focus is at all times on providing a quality service which matches or exceeds client expectations



ACCOUNTABILITY

Our ethos ensures that we are collectively accountable for delivering on commitments and for maintaining exceptionally high standards



INNOVATION

We are constantly innovating in how we do things to stay at the forefront of technical development to ensure that our clients get the best service available

Management Team



Idris Billow
Managing Director



Dahaba Mohamed
HR Manager



Suleiman Sheikh
Account Manager



Dr. Shahnaz Fatima Alvi
R & D and BD Manager



Abdihakim Billow
Logistic Manager



Salim Faraj
Design & Software
Engineer

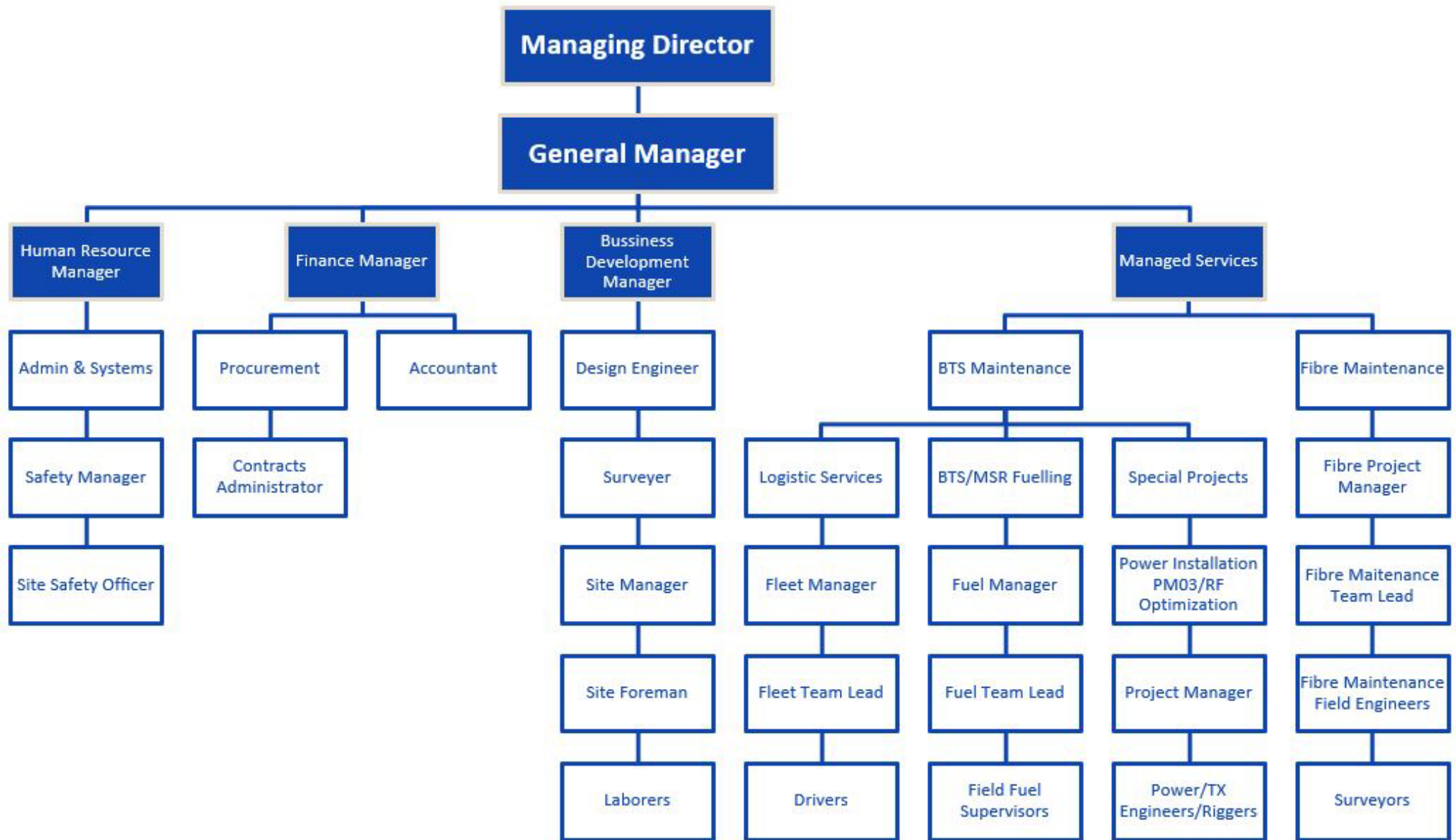


Mohamed Weli
Project Manager



Siyad Abdinoor Ali
Construction Manager

Team Structure



Safety Commitment



In Teamsol the safety of our employees is of paramount importance and must be seriously observed at all times. Our priority is the well-being of all employees, contractors, clients and stakeholders.

We believe in approaching safety pro-actively by integrating technology with occupational health and safety requirements promoting a culture of zero harm.



Products & Services

ENGINEERING FOR A BETTER FUTURE 



Telecommunication Services-Rollout

Teamsol is actively involved in BTS/GSM construction, configuration and commissioning. Currently we have partnered with Adrian Kenya and our clients are Safaricom and Telkom Orange.

The project entails:-

1. BTS Tower Construction

- Site survey and civil works, Site construction including foundation and electric fencing
- Tower erection, antenna support structure installation and rigging
- Lightening protection and grounding works
- GSM/Microwave antenna installation including testing and commissioning
- Power supply and connection including LVAPS/ATS boards / Rectifier systems, Battery installations and alarm termination and testing
- Indoor/outdoor BTS equipment installation and configurations
- Solar installation and integration
- Work in progress control and follow ups until site final acceptance and handover.

2. Fiber Optic Roll-out & Maintenance

- Route survey and design
- Trenching ducting and backfilling
- Aerial cabling
- Horizontal directional drilling
- Cable blowing and pulling
- Splicing and fusion



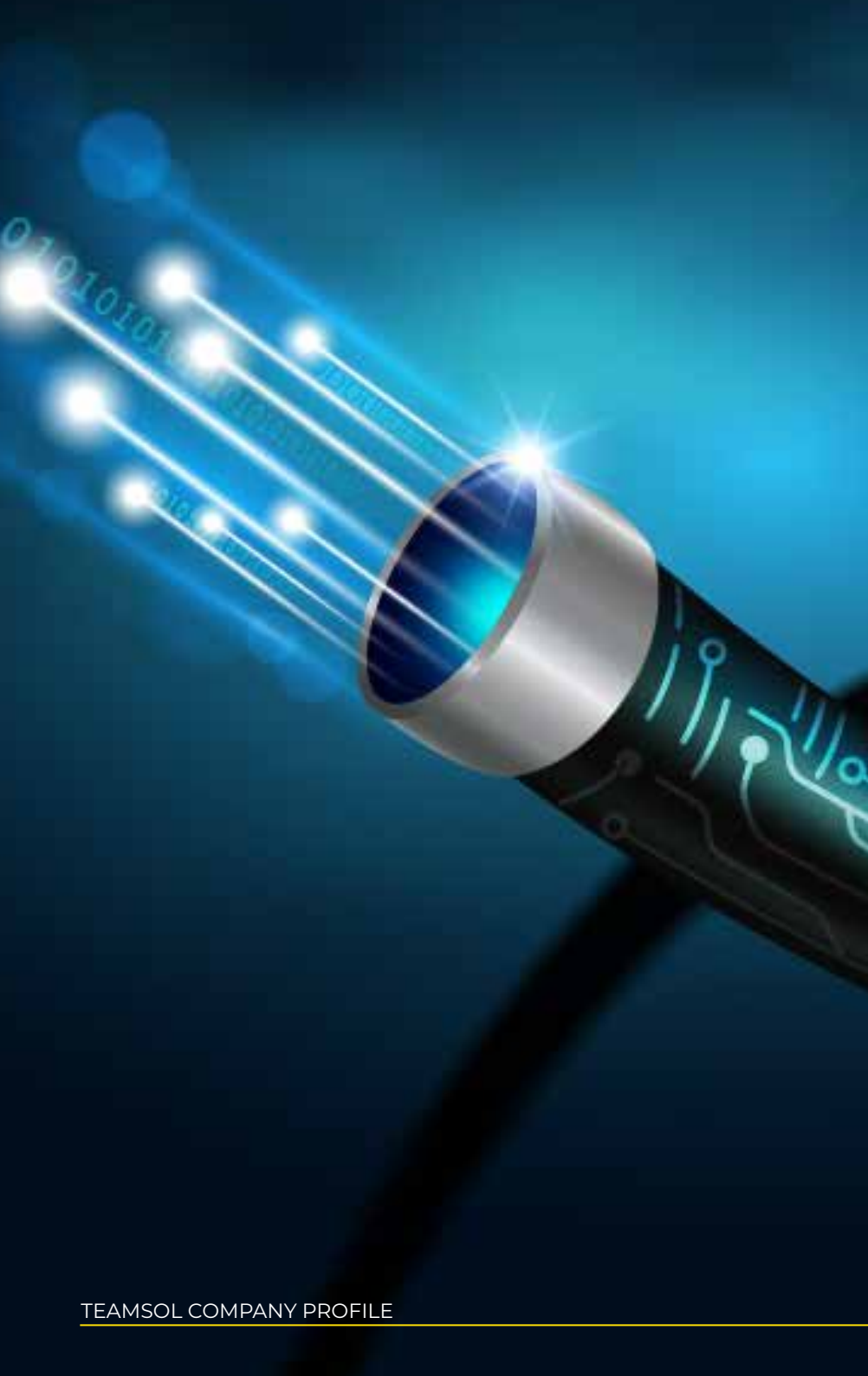
Telecommunication Services-Maintenance

Teamsol provides Manage services in BTS site maintenance, for Passive (power systems) and Active (transmission elements). Telecommunication network installations services, network testing products. Services offered include; design, implementation and commissioning of various types of both wireless and wire-line telecommunication products.

Teamsol offers Engineering solutions in telecommunication networks, overseeing equipment & service configurations, test & support networks in various stages of deployment, formulating network management strategies, producing & review of technical statement of work, working with internal technical teams & vendors for product placement & feature improvement for reliability, availability and serviceability. Work closely with vendors to test, design and plan for deployments of new products & features.

We are particularly experienced with mobile networks covering all network elements that includes, the infrastructure, Radio Frequency (RF) system and transmission network.

- 1. Active Maintenance:**
- 2. VSAT satellite installation, commissioning & maintenance services**
- 3. Facility Management**
- 4. Power Maintenance**



Fiber Optic Rollout & Maintenance

- Route survey and design
- Trenching ducting and backfilling
- Aerial cabling
- Horizontal directional drilling
- Cable blowing and pulling
- Splicing and fusion

Fiber To The Site project

Built and Connected over 40 Base station for Safaricom PLC. GSM Masts powered by high speed fibre optic networks cables in Nairobi and Mt. Kenya region as subcontractor under Quavatel Limited.

Fiber To The Home project

Designed and implemented the first affordable internet to Kenyan homes real estate under Safaricom Fibre To The homes (FTTH) in Mombasa as subcontractor under Quavatel Limited.

Fiber Maintenance

Maintained the NOFBI (Nation Optical Fibre Infrastructure) project for the Government of Kenya as last mile internet connection Across Kenya for the eight provinces as subcontractor under Quavatel. Teamsol Does maintenance on need base.



Civil Works & Construction

Teamsol has partnered with National Government of Kenya, County Government in Nairobi, Wajir, Marsabit, Garissa and Mandera in construction Projects.

Under construction our scope involves;

1. Roadworks

From construction of driveways to complex projects as highways, Teamsol adapts its resources and offers its public and private sector customers the techniques and products (asphalt mixes, concrete pavements, mastic asphalt, resins) best suited to their specific requirements.

2. Pre-cast

We offer a wide range of quality pre-cast products for both building and civil works. We can also customize standard pre-cast products for various needs.

3. Design & build

Our proposed approach combines the traditionally separate design and construction phases into a single design-build contract. This parallel process is more collaborative, and creates buildable and affordable projects that better match budgets and expectations.



Civil Works & Construction

4. Steel Fabrication

Our metal works workshop carries out fabrication of contract metal work and optimizes cut and bend of steel reinforcement.

5. Construction & Rehabilitation of Roads

Including: access roads, infrastructure and maintenance, town roads and pedestrian walkways.



Logistics Services

Teamsol is the leading transport service provider in the country and especially in Northern Frontier region. Teamsol have adopted to the harsh terrain experienced in the region and managed to build a reputation of reliability in logistic service provision due to our professional approach, competitive pricing and large network.

With the quality of service rendered by us right from the inception we have become the most preferred logistic service providers both locally and nationally.

Our vehicles include:

Semi trailer trucks, 20/10 wheeler trucks, Land cruisers, Hilux, luxury saloon cars, Probox, Self-loader trucks, fuel tankers etc.

Services include

- **Logistics to facilitate Network maintenance.**
- **Logistics solutions in remote Northern Frontier for relief & NGOs.**
- **Partnering with security companies such as G4S for transportation**
- **Distribution of fuel and energy in North Eastern Kenya**
- **Transit Goods & Services in East Africa**



Energy Petroleum Products

Teamsol has ventured into Energy/Petroleum product bulk distribution and selling and has been successful in delivering more than 600,000 liters of fuel per month. It has established its own service stations for retail distribution.

- Teamsol provides bulk petroleum product to over 50 service stations in the country, mostly in remote Northern Kenya. The quantity of fuel supplied is about 400,000 liters and the monthly projection is 800,000 liters.
- Teamsol is also operating its own Service stations in Moyale and Wajir towns
- Teamsol has partnered with Adrian Kenya and provides/delivers fuel to Safaricom BTS Networks in Mt. Kenya region. The quantity of fuel supply per month is over 180,000 liters.
- Teamsol has partnered with Adrian Kenya and provides/delivers fuel to Safaricom MSRs in Mt. Kenya region. The quantity of fuel supply per month is over 20,000 liters.
- Teamsol has partnered with Total as one of their Bulk petroleum product distributor in Kenya and is currently working on meeting the minimum weekly distribution target of 200,000 liters of fuel distribution.
- Teamsol is also partnering with Lake oil and Hass petroleum to further diversify its energy portfolio.



Electronic board designs Software development

Teamsol endeavors to provide electrical & Electronic solutions such as in-house design and customized electronic designs and implementations. It's intensively doing R&D in Electronic PCB designs, software development among other solutions, currently, the company has developed and tested a data acquisition device prototype as an asset tracker and obtained satisfactory results.

It was able to acquire data from the GPS system and upload it to a secure server and the data was displayed as a map layer in a map application to plot its movement over given periods of time. It also sent information via SMS text. Teamsol has successfully secured 1 patent for smart electronic lock system and 2 utility rights propriety

- We have developed a smart electronic lock system and currently working on other electronic solutions.
- We have gained experience in both electronic boards design and maintenance of electronic systems.
- Design and implement electronic real-time GPS GSM/GPRS monitoring both Hardware and Software solutions.
- Design and implement industrial electrical and electronic control systems and switch systems- (PLC, PID, ATS, SMPS and microprocessor systems)
- Design and fabrication of robotic systems
- Maintenance of industrial electrical systems and telecommunication equipment's.
- Customized design and implement advanced electronic security systems (CCTV, Access Control, and Intrusion systems).
- Design and implement Real-time GSM/GPS Monitoring alarm system.
- Software development solutions.
- Supply industrial equipment.



Training & Capacity Building

At Teamsol we take pride in the future generation by providing industrial trainings for students to help them improve their practical skills in different fields. These courses include;

1. Telecommunication Training
2. Electrical Training
3. Logistics and Fleet management training
4. Construction, design and structural engineering training
5. Health & Safety Training



Our Projects

ENGINEERING FOR A BETTER FUTURE 

Our Projects

Dates	Site Name Type of work Undertaken	Owner	Works Undertaken
7/11/2018	Ademasajida Site Primary School Sub contraction Electrical supplies and installation works	Safaricom PLC	Site survey and civil works, Site construction including tower foundation, Masonry, ducting /Manhole and electric fencing. Tower erection, antenna support structure installation and rigging services. Antenna, RRUs & MW installation. Lightening protection and grounding works, GSM/ Microwave antenna installation including testing and commissioning. Electrical & power installation, BTS installation, site acceptance.
7/11/2018	Dasheg Site Sub contraction tower erection, painting and rigging and Civil works		
12/09/2019	Moyale Ansarudin		
27/02/2020	Biliqo Bisan site		
30/05/2018	Renovations and equipping of Science Laboratory at Ademasajida Mixed Day Secondary school	Safaricom Foundation CSR	Construction of Modern Chemistry & Biology Laboratory for Amale secondary school in Habaswein wajir county. Supply of the laboratory equipment & installation
18/07/2018	DZMANYI TKL Site Sub contraction tower erection, painting and rigging works	Telkom Kenya	<ul style="list-style-type: none"> • Reinforcement bars (used to reinforce tower sites) • Generator: • Tower Erection include Torque and verticality test (Tower to be delivered to site) • Tower painting (Tower Paints are free issue materials and to be delivered to site) • Fall Arrest Installation as spec • Antenna poles (3 no) Installation • Microwave pole (1 no) Installation
18/07/2018	Kamrapunda Site Sub contraction Tower erection, painting and rigging works		
18/07/2018	Marungu Site Sub contraction tower erection, painting and rigging works		
18/07/2018	Mwanda Jawuli Site Sub contraction Tower erection, painting, rigging works		
12/09/2018	Kandenderu Site: EC 1968 Kandenderu site less than 60Km from Nairobi		

Our Projects

Dates	Site Name Type of work Undertaken	Owner	Works Undertaken
1/21/2019	Abakaile primary school,site ID 18056_MK_EU1597 Full scope site construction-Subcon.	Safaricom PLC	<ul style="list-style-type: none"> • Site survey and civil works, Site construction including tower foundation, Masonry, ducting /Manhole and electric fencing. • Tower erection, antenna support structure installation and rigging services. • Antenna, RRUs & MW installation • Lightening protection and grounding works • GSM/Microwave antenna installation including testing and commissioning. • Coaxial cabling (transmission lines which carry the signal received from the antenna to the base-station. • Electrical/Power supply and connection including; inverters, ATS boards /Rectifier systems, Battery installations and alarm termination and testing. • Solar installation and integration. • Indoor/outdoor BTS equipment installation and configurations; Radio-BTS integration. • Work in progress control and follow ups until site final acceptance and handover.
01/02/2018	Karare site, Site ID 17136_MK_EU1895- Full scope site construction-Subcon		
04/04/2018	Mogasha Site ID 18023_MK_EC1200 Full scope site construction-Subcon.		
04/04/2018	Karatina Jambo EC0880 Site sub contraction for Civil works for Karatina Jambo 35M R2		
30/05/2018	Gituru Site Sub contraction for Gituru site 17996_MK_EC1225 45M tower tech R2		
30/05/2018	Kagundu Site Sub contraction for Kagundu site 17994_MK_EC 1866 45M Tower-tech R2		
11/06/2018	Kanyariri site ID 18019_MK_EC1199 Full scope site construction-subcon		
26/06/2018	Mwanzungululu Nguuku-18022_MK_EC1902 Full site construction scope-Subcon.		

Our Projects

Dates	Site Name Type of work Undertaken	Owner	Works Undertaken
04/04/2019	Alikune Site ID 19183_MK_EU5565- Full scope site construction; Subcon.	Safaricom PLC	<ul style="list-style-type: none"> • Site Survey and civil works, Site construction including tower foundation, Masonry, ducting /Manhole and electric fencing. • Tower erection, antenna support structure installation and rigging services. • Antenna, RRUs & MW installation • Lightening protection and grounding works • GSM/Microwave antenna installation including testing and commissioning. • Coaxial cabling (transmission lines which carry the signal received from the antenna to the base-station. • Electrical/Power supply and connection including; inverters, ATS boards /Rectifier systems, Battery installations and alarm termination and testing. • Solar installation and integration. • Indoor/outdoor BTS equipment installation and configurations; Radio-BTS integration. • Work in progress control, final acceptance/ handover.
16/04/2019	Kasha Site ID 17974_mk_eu1577- Full scope site construction; Subcon.		
18/05/2019	DaMakere (Daku) Site ID 18552_MK_EU1591- Full scope site construction; Subcon.		
07/06/2019	Shikaadabu Site ID 18551_MK_EU1592- Full scope site construction; Subcon.		
17/09/2019	Ogorji Site ID 17174_MK_EU5914- Full scope site construction; Subcon.		
03/09/2018	Dirdima Site ID 17170_MK_EU1888- Full scope site construction; Subcon.		

Awards & Recognitions



Best performing
Platinum partner in
Managed services division.



Best performing
Gold partner in
Supply chain department.



Best performing
Gold partner in
Construction division.

Our Clients



Adrian®



Safaricom



CONTACT

KP Offices, Office No 11
Jakaya Kikwete Road, Kilimani
P.O. Box 13101-00400, Nairobi
+254723238391/+254729793936
info@teamsol.co.ke
www.teamsol.co.ke

TEAMSOL

ENGINEERING FOR A BETTER FUTURE 